



ORIGINAL RESEARCH

Open Access



A spatially explicit analytical framework to assess wildfire risks on brown bear habitat and corridors in conservation areas

Rasoul Khosravi^{1*} , Hamid Reza Pourghasemi¹, Roya Adavoudi², Leila Julaie³ and Ho Yi Wan⁴

Abstract

Background: Humans have altered fire regimes across ecosystems due to climate change, land use change, and increasing ignition. Unprecedented shifts in fire regimes affect animals and contribute to habitat displacement, reduced movement, and increased mortality risk. Mitigating these effects require the identification of habitats that are susceptible to wildfires. We designed an analytical framework that incorporates fire risk mapping with species distribution modeling to identify key habitats of *Ursus arctos* with high probability of fire in Iran. We applied the random forest algorithm for fire risk mapping. We also modeled brown bear habitats and predicted connectivity between them using species distribution models and connectivity analysis, respectively. Finally, the fire risk map, critical habitats, and corridors were overlaid to spatially identify habitats and corridors that are at high risk of fire.

Results: We identified 17 critical habitats with 5245 km² of corridors connecting them, 40.06% and 11.34% of which are covered by conservation areas, respectively. Our analysis showed that 35.65% of key habitats and 23.56% of corridors are at high risk of fire.

Conclusions: Since bears habitat in this semi-arid landscape rely on forests at higher altitudes, it is likely that shifting fire regimes due to changing climate and land use modifications reduce the extent of habitats in the future. While it is not well known how fire affects bears, identifying its key habitat where wildfires are likely to occur is the first step to manage potential impacts from increasing wildfires on this species.

Keywords: Biodiversity conservation, Conservation area, Disturbance ecology, Fire ecology, Fire risk mapping, Risk assessment, Species distribution model, *Ursus arctos*

* Correspondence: r-khosravi@shirazu.ac.ir

¹Department of Natural Resources and Environmental Engineering, College of Agriculture, Shiraz University, Shiraz 71441-13131, Iran
Full list of author information is available at the end of the article



© The Author(s). 2022 **Open Access** This article is licensed under a Creative Commons Attribution 4.0 International License, which permits use, sharing, adaptation, distribution and reproduction in any medium or format, as long as you give appropriate credit to the original author(s) and the source, provide a link to the Creative Commons licence, and indicate if changes were made. The images or other third party material in this article are included in the article's Creative Commons licence, unless indicated otherwise in a credit line to the material. If material is not included in the article's Creative Commons licence and your intended use is not permitted by statutory regulation or exceeds the permitted use, you will need to obtain permission directly from the copyright holder. To view a copy of this licence, visit <http://creativecommons.org/licenses/by/4.0/>.

Resumen

Antecedentes: Los seres humanos han alterado los regímenes de fuego a lo largo de los ecosistemas debido al cambio climático, a cambios en el uso de la tierra y al incremento de las igniciones. Estas desviaciones sin precedentes en los regímenes de fuego afectan a los animales y contribuyen al desplazamiento de sus hábitats, reducen sus movimientos, e incrementan el riesgo de mortalidad. Mitigar esos efectos requiere la identificación de hábitats que son susceptibles al fuego. Diseñamos un marco analítico que incorpora el mapeo del riesgo de incendios con modelos de distribución de especies para identificar hábitats clave de *Ursus arctos* (oso pardo) con alta probabilidad de fuego en Irán. Aplicamos el algoritmo al azar para bosques para el mapeo de riesgo de incendio. También modelamos hábitats de oso pardo y predijimos la conectividad entre ellos usando modelos de distribución y análisis de conectividad, respectivamente. Finalmente, el mapa de riesgo de incendio, hábitats críticos y corredores fueron superpuestos para identificar espacialmente los hábitats y corredores que estuviesen en riesgo alto de incendios.

Resultados: Identificamos 17 hábitats críticos con 5.245 km² de corredores conectándolos, 40,06% y 11,34% de ellos estaban cubiertos por áreas de conservación, respectivamente. Nuestro análisis mostró que el 35,65% de los hábitats clave y 23,56% de los corredores están en riesgo alto de incendios.

Conclusiones: Dado que los hábitats en este paisaje semiárido se encuentran en los bosques de altura, es probable que el cambio en los regímenes de fuego debido al cambio climático y modificaciones en el uso de la tierra reduzca la extensión de estos hábitats en el futuro. Aunque no es bien conocido el efecto de los incendios sobre los osos, identificar sus hábitats clave donde los fuegos probablemente ocurran, es el primer paso para manejar posibles impactos del incremento de los incendios sobre esta especie.

Background

Natural fire regimes maintain the health of many ecosystems (Pausas and Keeley 2019) but anthropogenic climate change and land use change has altered these regimes worldwide in an accelerated rate, which poses a threat on biodiversity (Dennis et al. 2001). Forest fires can directly or indirectly impact wildlife species by increasing mortality of individuals (Clark et al. 2011), changing habitat extent and quality (Richardson et al. 2007; Wan et al. 2019b), decreasing population size (Kramp et al. 1983), changing movement patterns (Nimmo et al. 2019), causing outbreaks of diseases (Ecke et al. 2019; Albery et al. 2021), and decreasing food and shelter availability (Banks et al. 2011). The magnitude of these impacts is, however, highly dependent on the spatial and temporal scales of fires (Hobbs and Huenneke 1992; Pickett and White 2013; Wan et al. 2020), as well as the biological and ecological characteristics of species in adapting to fires (Chambers et al. 2019).

Large carnivores that depend on forest cover as their primary habitat might be particularly vulnerable to altered fire regimes. While the effect of fire on these species and their habitat is generally perceived as negative, the actual relationship is complex and ambiguous for many species. For example, prior wildfire studies on bears have produced mixed results. Wildfires can negatively impact adult sex ratio, recruitment of cubs, and population size (Cunningham and Ballard (2004). Wildfires can also destabilize and degrade habitats surrounding den sites by altering vegetation composition and increasing the depth of the active soil layer

(Richardson et al. 2007). However, wildfires can sometimes lead to increased abundance and availability of and easier access to food sources (Blanchard and Knight 1990; Hamer 1999).

Because wildfires are more likely to have direct impacts on habitat than on animals, forest and species management plans can benefit from having information that identifies critical habitat susceptible to fire (e.g., Meng et al. 2016) as well as post-fire habitat change (Wan et al. 2020). Species distribution models have been increasingly used to provide some of this information, including the usage in predicting critical habitats, connectivity, and susceptibility of landscape to disturbance events (Cushman et al. 2017; Kaszta et al. 2020). However, one important, but rare, application is to streamline these models into a systematic spatial analytical framework for assessing fire risks on species critical habitat and corridors. Such an analytical framework would provide tremendous values in managing wildfire risks on species habitat experiencing changing fire regimes.

The brown bear (*Ursus arctos*; Linnaeus 1758) is the largest carnivore species of Iran, inhabiting forest and mountainous ecosystems along the Alborz and Zagros mountain ranges (Gutleb and Ziaie 1999). The Zagros Mountains forest steppe is the largest forest region in Iran, representing one of the most important habitats for the brown bears in the country. About 15.36% of this forest is located in the Fars province. The forest has been increasingly impacted by wildfires due to humans and changing climate. For example, the record for the

highest number of annual forest fire incidence were broken in 2015, which burned 937 ha of forest lands (The Center for Strategic Studies, 2017). In 2020, over 1700 ha of rangeland and forests were burned by wildfires, representing one of the biggest records in burned area in this province. Recently, in 2021, 150 forest fire incidences have been reported during the hot months. Such a trend in fire activity raises concerns for natural habitats management.

While it is not well known how forest fires affect brown bears in Iran, increasing forest fires due to climate and land use changes in this region may reduce the extent of brown bear habitat and its range in the future. Therefore, identifying key habitats where forest fires are likely to occur is the first steps to mitigate the negative effects or increase the positive impacts of such events. Although there are critiques of umbrella and single-species conservation approaches (Simberloff 1998; Andelman and Fagan 2000), brown bears may serve as an “umbrella species” for structuring site-based conservation of forest habitats (Khosravi et al. 2019) because of their large area requirements, charismatic appearance, and low densities.

Using the brown bear in Iran as an example, we demonstrate a spatially explicit analytical framework that adopts a series of models for assessing wildfire risks for wildlife species. This framework contains four key components: (1) identifying critical habitats, (2) evaluating connectivity between critical habitats, (3) produce fire risk map, and (4) identifying habitats and corridors associated with high risk of wildfire.

Methods

The methodological framework

Our case study area is located in the southwestern Iran, Fars province, with an extent of 125,857 km². It is characterized by semi-arid climate conditions. The mean temperature and annual rainfall are 16.8 °C and 315 mm, respectively. This area contains several conservation areas (a total of 23,819 km²) in four main categories including national parks (NPs), wildlife refuges (WRs), protected areas (PAs), and no-hunting areas (NHAs). A number of large species of conservation importance such as brown bear, Persian leopard (*Panthera pardus*), caracal (*caracal caracal*), gray wolf (*Canis lupus*), mouflon (*Ovis gmelini*), goitered gazelle (*Gazella subgutturosa*), and wild goat (*Capra aegagrus*) are found in the region. Forests (12.49%), rangelands (55.21%), and farmlands (23.02%) cover 90.72% of the study area (Fig. 1). The status of brown bears in this part of Iran is of great concern. This is the southernmost extent of brown bear's range in the world. The bear population here is genetically distinct from other populations in Iran (Ashrafzadeh et al. 2016). They mostly rely on water

sources in densely forested areas at higher altitudes where human access is limited (Ansari and Ghoddousi 2018). The forests of the Zagros Mountains are threatened by droughts, extensive land-use changes, and wildfires (Sagheb-Talebi et al. 2014). Therefore, conserving this population is a pressing priority.

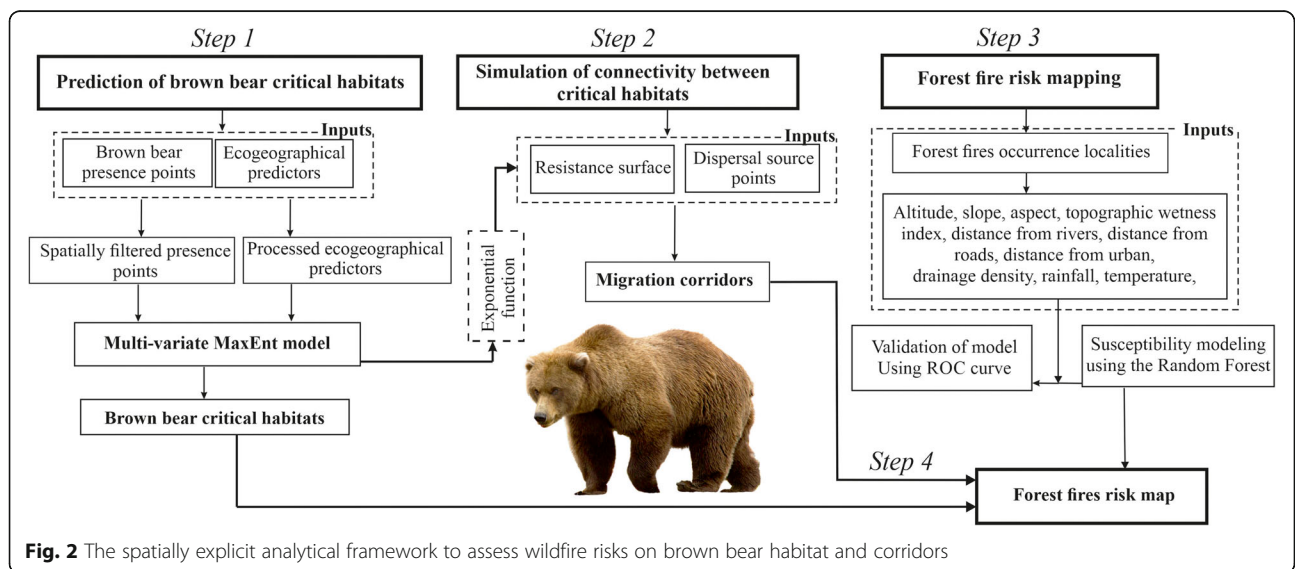
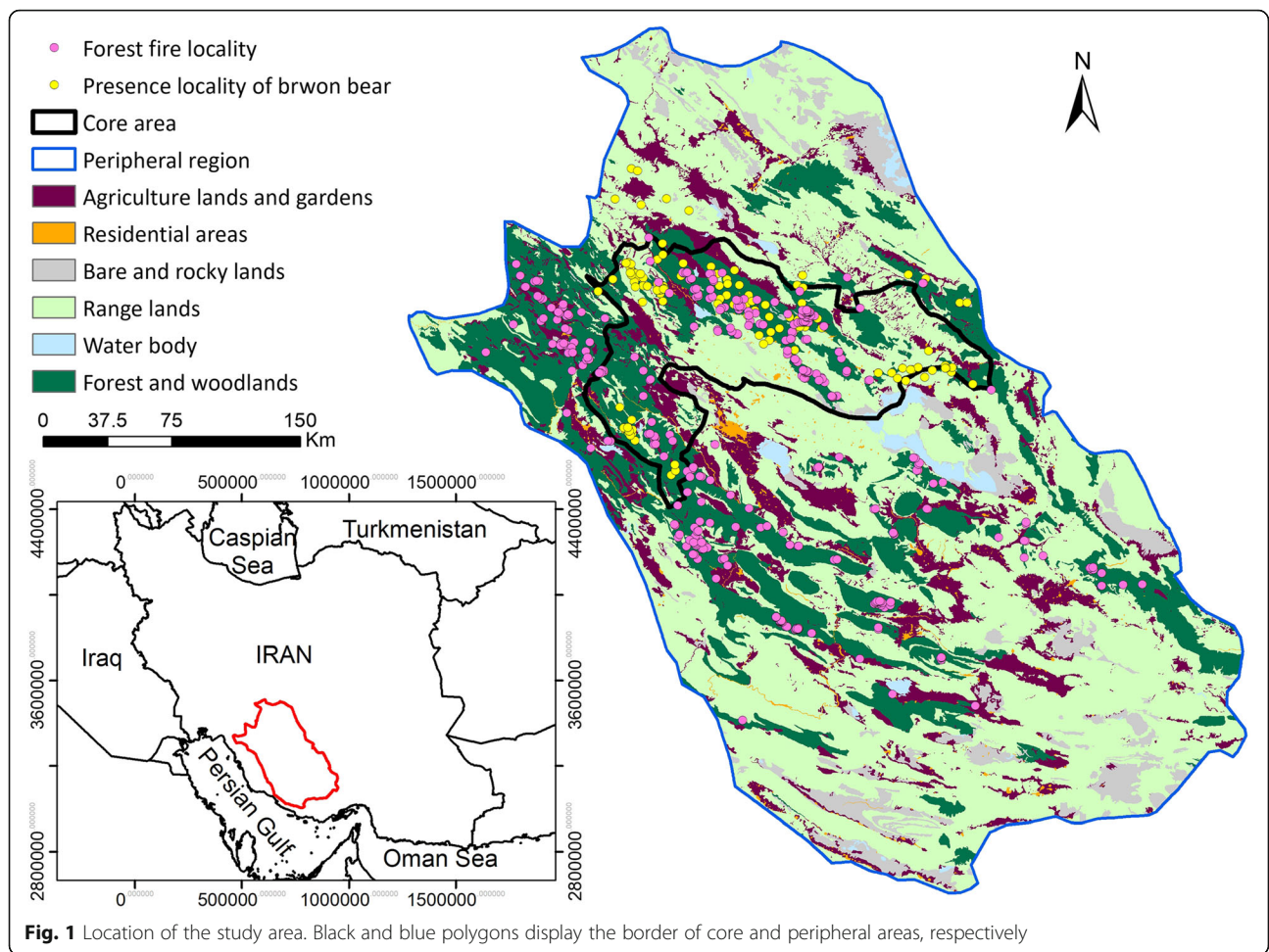
We carried out a spatially explicit analytical framework that consists of four key steps, including (1) predicting the critical habitats of the species, (2) evaluating connectivity between the predicted critical habitats, (3) producing a fire risk map across the study area, and (4) synthesizing the results from those three steps to map and identify critical habitats and corridors associated with high wildfire risks (Fig. 2). The steps undertaken in the study are explained in detail below:

Species potential distribution and critical habitats

In 2015–2019, we collected opportunistic observations of brown bear signs (i.e., scats and tracks; $N = 58$) and direct observations of brown bears by the game guards and wildlife experts or human-caused mortality due to conflict with people ($N = 113$). To reduce spatial autocorrelation and sampling bias in presence points, we used a spatial filter such that each locality was at least 400-m from others (Falcucci et al. 2009). After the spatial filtering, 112 presence points remained for the modeling.

We divided the study area into two regions based on the field surveys and expert opinion: the core area covering the main current range of brown bears, with the highest population densities, and peripheral areas with occasional observations (Fig. 1). Although the peripheral regions include only sporadic occurrence of bears and might not cover the current distribution range of the species, these regions may provide suitable habitats for bears to expand their range. The model was calibrated across the core area and then projected over the peripheral region. To calibrate the species distribution model, we used seven land use/land cover types, five topographic features, two anthropogenic factors, two climatic variables, and normalized difference vegetation index (NDVI) based on literature review (Ansari and Ghoddousi 2018; Farashi 2018; Almasieh et al. 2019; Maiorano et al. 2019). All variables were calculated in a 50-m × 50-m cell size. A detailed description on the preparation of the predictor layers is given in Table S1 in Online Resource 1.

Dispersing and settled individuals may be affected by different fine- and broad-scale patterns (Mateo Sanchez et al. 2014). Therefore, we fit models for predicting critical habitats and connectivity separately. We used coarse-scale models to provide a second-order (Johnson 1980) prediction of the species' potential distribution. For this aim, we used a moving window with a radius of



450-m around each original pixel (i.e., 50-m) across the study area (Falcucci et al. 2009; Maiorano et al. 2019). For each categorical variable (e.g., land cover classes), we calculated the percentage of cover within a moving window of 450-m using FRAGSTATS (McGarigal et al. 2012). For each continuous variable (e.g., topographic measures), the mean value inside a given radius was calculated using neighborhood statistics in ArcGIS 10.2.2 (ESRI, 2015).

We applied three filtering steps to reduce the number of variables for the final species distribution model. First, we removed predictors that occurred at < 10% of presence localities because of lack of representation (Macdonald et al. 2018). Second, predictors with variance inflation factor (VIF) ≥ 2 were removed (Maiorano et al. 2019). Finally, we assessed multicollinearity between each pair of variables and for correlated pairs ($R > 0.7$) only the variable with the lower VIF was retained (Wasserman et al. 2012; Dormann et al. 2013). Following the reduction process, we used fourteen variables in the final model (Table S1 in Online Resource 1).

To predict critical habitats, we implemented the MaxEnt model using the “dismo” R package (Hijmans et al. 2017). The model was calibrated according to the presence localities within the core area. We ran MaxEnt using a 10-fold cross-validation and calibrated models using 75% of occurrence points as training data, and the remaining 25% of data for evaluation model predictions. To account for sampling bias of absence localities, we randomly selected a set of 1000 background localities within the boundaries of the core area (Maiorano et al. 2019; Dondina et al. 2020). We kept other default parameters of the MaxEnt. The overall model’s performance was evaluated by calculating the area under the receiver operating characteristic curve (AUC), true skill statistic (TSS; Allouche et al. 2006), and Kappa statistic (Landis and Koch 1977). Then, we projected the calibrated model in the core area over the entire landscape area (i.e., both core and peripheral area).

The final distribution map was converted into a binary layer (i.e., suitable vs. unsuitable habitats) to identify critical habitats (areas with high suitability values predicted by the model) using Maximum Training Sensitivity plus Specificity occupancy threshold (Liu et al. 2013; Poor et al. 2020). We evaluated the reliability of the projection of the model to the peripheral area using the analysis of Multivariate Environmental Similarity Surfaces (MESS; Elith et al. 2010). Finally, we used Morphological Spatial Pattern Analysis in the software GUIDOS v. 2.1 (Soille and Vogt 2009) to remove predicted critical habitats with very small extents (< 70 km²) that were unlikely to serve as core habitat. This threshold corresponds to the minimum threshold to ensure the stable occurrence of at least an adult female bear (Maiorano et al. 2019).

Connectivity between critical habitats

Species distribution models trained with predictors at fine spatial resolutions can be used as a useful alternative, although weaker than models based directly on movement, to movement data to parameterize resistance surfaces in connectivity analysis (Zeller et al. 2018). Ziólkowska et al. (2016) suggested that resistance maps derived from the species distribution models with predictors at broad and medium spatial resolutions may underestimate connectivity. Therefore, we included all covariates at a fine spatial scale (50-m) into the MaxEnt model to predict the distribution map of the species for further connectivity analysis. Then, the obtained distribution map was converted to a resistance surface using an exponential decay function (Wan et al. 2019a):

$$R = 1000^{-1*HS} \quad (1)$$

where R is the cost resistance value assigned to each pixel and HS shows the predicted habitat suitability value. The calculated resistance surface was rescaled to a range between 1 and 10 by linear interpolation.

We followed the method developed by Macdonald et al. (2018) and Kaszta et al. (2020) to create a set of random points for habitat connectivity. This method was implemented in the following steps: first, the predicted distribution map at fine spatial scale was rescaled between 0 and 1. In the second step, we created a raster layer in the extent same as distribution map and distributed values of pixels from 0 to 1 randomly and uniformly. Then, we subtracted the created random raster layer described above from the rescaled distribution map to determine pixels with positive values. Finally, we selected 200 points randomly from these pixels. This creates a stochastic draw of simulated occurrence points and habitat suitability weighted connectivity modeling (Cushman et al. 2016) which may be parallel to the idea of using density-weighted connectivity modeling (Morin et al. 2017). Potential source locations were created in such a way as we assumed that higher predicted habitat suitability means more dispersing individuals (Macdonald et al. 2019; Kaszta et al. 2020). The selected source locations were spatially rarefied to simulate the presence of the species across the study area. The selected source locations were used as starting locations on individuals for subsequent connectivity analysis.

We calculated factorial least-cost paths (Cushman et al. 2009) using the UNICOR software (Landguth et al. 2012) to predict connectivity among critical habitats based on the selected source points and predicted resistance surface described above. The selected source points define starting and ending nodes of the least-cost linkages in the connectivity analysis. The factorial least-cost path method relies on Dijkstra’s algorithm to predict

optimal least-cost linkages from each source point to every other destination locality. The predicted least-cost paths are buffered based on kernel density estimations and Gaussian function. The buffered least-cost linkages were then combined through summation (Cushman et al. 2009) to produce maps of connectivity among all pairs of source points. We calculated the factorial least-cost paths without a dispersal threshold to provide a broad-scale assessment of the spatial pattern of potential corridors (Cushman et al. 2013).

Fire risk mapping

Based on extensive field surveys, Google Earth images, and various national reports collected by Iranian's organizations, we identified 358 fires locations in the study area from 2010 to 2018 (Fig. 1). We divided this dataset into training and validation subsets in a portion of 70/30, respectively. We selected the following variables for fire risk mapping based on our knowledge about the area: altitude, slope, aspect, topographic wetness index (*TWI*), distance from rivers, roads, urban, drainage density, annual mean rainfall, and temperature. We collected raster layers representing the above variables, and then extracted the value of each variable at each fire locations (see Text S1 in Online Resource 1). We used random forest to model the relationship between those variables and fire likelihood and then created a fire risk map by projecting that random forest model with the raster layers (Pourghasemi et al. 2020). Random forest has been shown to be one of the most powerful methods for predicting the disturbance and landscape change (e.g., Cushman et al. 2017; Abdullah et al. 2019; Murphy 2019; Milanović et al. 2021). We used mean decrease Gini and mean decrease accuracy to assess variable importance (Rahmati et al. 2019) and used *OOB* (Out-Of-Bag) error to assess model performance (Evans and Cushman 2009; Genauer et al. 2010). For the classification of the fire risk map, we used the natural break method (Yan et al. 2019) to divide it into four classes, including low (0–0.17), moderate (0.17–0.45), high (0.45–0.71), and very high (0.71–1.00) fire risk.

Composite map of predicted critical habitats and fire risk map

We overlaid the layers of predicted critical habitats, corridors, and conservation areas with the fire risk map to create a composite map and determine which critical habitats, corridors, and conservation areas are susceptible to fires.

Results

Species' distribution and critical habitats

The MaxEnt model showed high performance in predicting suitable habitats for brown bear across the study

area (AUC = 0.805; TSS = 0.738; Kappa = 0.428). Topographic roughness (Reily et al. 1999; Evans et al. 2014), annual mean temperature, annual rainfall, and forest cover were the most important variables in predicting species' occurrence. With increasing topographic roughness and forest cover, habitat suitability increased to its maximum and then stabilized at high values of these variables. Mean annual temperature was negatively correlated with the species' occurrence and probability of brown bear occurrence was predicted to decrease with an increase in annual mean temperature. Also, with increasing rainfall habitat suitability increased to its maximum and then leveled off above 680 mm.

Using the Maximum Training Sensitivity plus Specificity occupancy threshold, 8.96% of the study area (11,276 km²) was recognized as highly suitable habitat. Highly suitable habitats were more widely distributed across the northern, northeastern, and northwestern parts of the study area (Fig. 3a). According to the *MSPA*, we identified 17 critical habitats (larger than 70 km²) with 9135 km² in extent across the area, 40.06% of which are covered by existing conservation areas (3,660 km²). The extent and percentage of protected critical habitats differed among types of conservation areas. The maximum overlap was provided by no-hunting areas (2780 km²), while no areas with critical habitats were identified inside the national park (Fig. 3b). We found some unprotected critical habitats especially north of the core areas of brown bear habitat and also northern parts of the study area (Fig. 3b). The results of Morphological Spatial Pattern Analysis showed that 18% of peripheral area were outside the range of environmental values measured in the main core region.

Connectivity between critical habitats

Our UNICOR analysis identified a total of 5245 km² migration corridors among critical habitats, of which 11.34% are within the boundaries of the existing conservation areas (595 km²; Fig. 3b). The most density of the predicted corridors among critical habitats concentrated in the habitat core area (40.42%; 2,120 km²) and northern parts of the peripheral region. Connectivity in other parts of the peripheral area was predicted to be weak. Considering the whole study area, nearly 90% of the predicted corridors are not covered by any type of conservation areas (Fig. 3b).

Fire risk map

The result of fire risk mapping is shown in Fig. 4. The percentages of the natural breaks of the four risk classes in fire map was 74.67% (low), 8.58% (moderate), 7.86% (high), and 8.89% (very high), respectively.

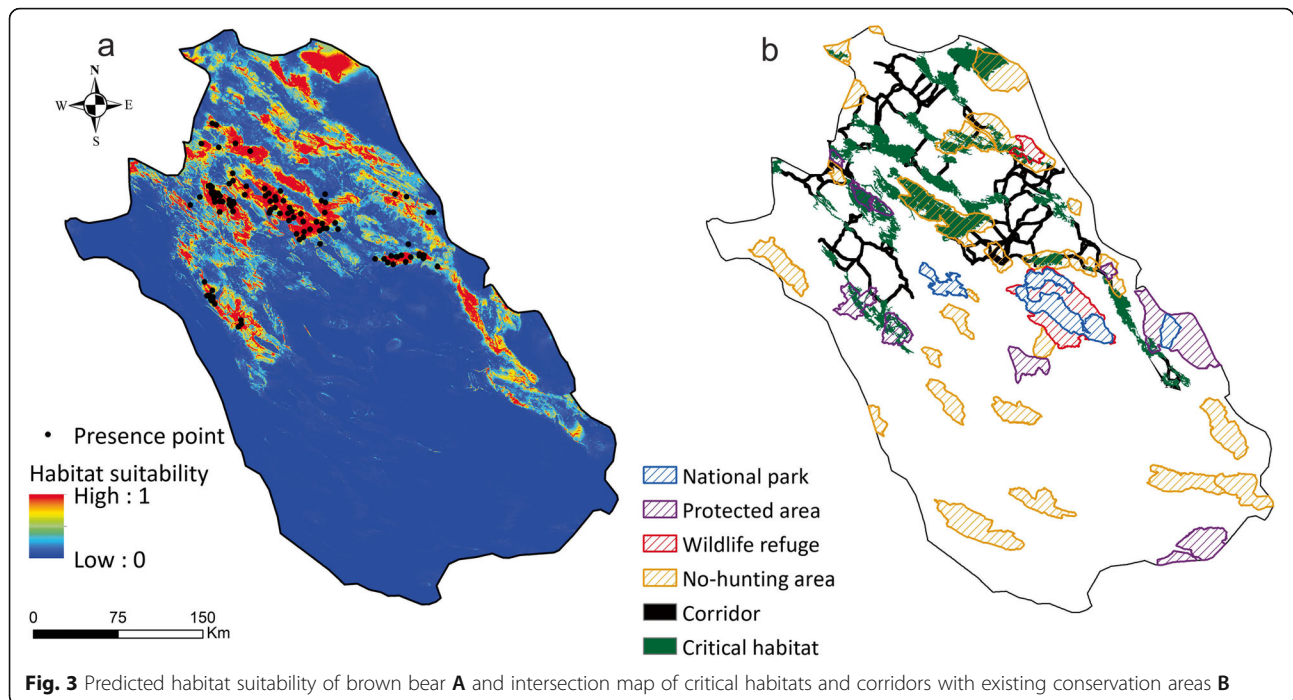


Fig. 3 Predicted habitat suitability of brown bear **A** and intersection map of critical habitats and corridors with existing conservation areas **B**

Composite map of predicted critical habitats, corridors, and the fire risk map

According to the intersection maps of the predicted critical habitats, migration corridors, and conservation areas with risk map of fire, a total of 35.65% of critical habitats of brown bear (3,257 km²) and 23.56% of its corridors (1,236 km²) were identified as areas with high and very high risk of fires respectively. Predicted critical habitats with high risk of fire were high especially in the northern and southwestern parts of core area. According to the fire risk map, 23.69% of the existing conservation areas with 5641 km² in extent overlap with areas where the modeled disturbance is likely to occur. No-hunting areas (4175 km²) and national parks (4.33 km²) showed the maximum and minimum overlap, respectively. We also identified currently unprotected areas that showed high risk of the occurrence of fire (Fig. 4).

Discussion

Despite numerous studies mapping landscape susceptibility to forest fire, few studies have investigated the sensitivity of key habitats to these events. Such studies require an accurate identification of key habitats and connectivity between them. This study is the first to compare fire risk with key habitats, corridors, and existing conservation areas to provide a spatially explicit depiction of the brown bear's critical habitats and corridors at high risk of fire.

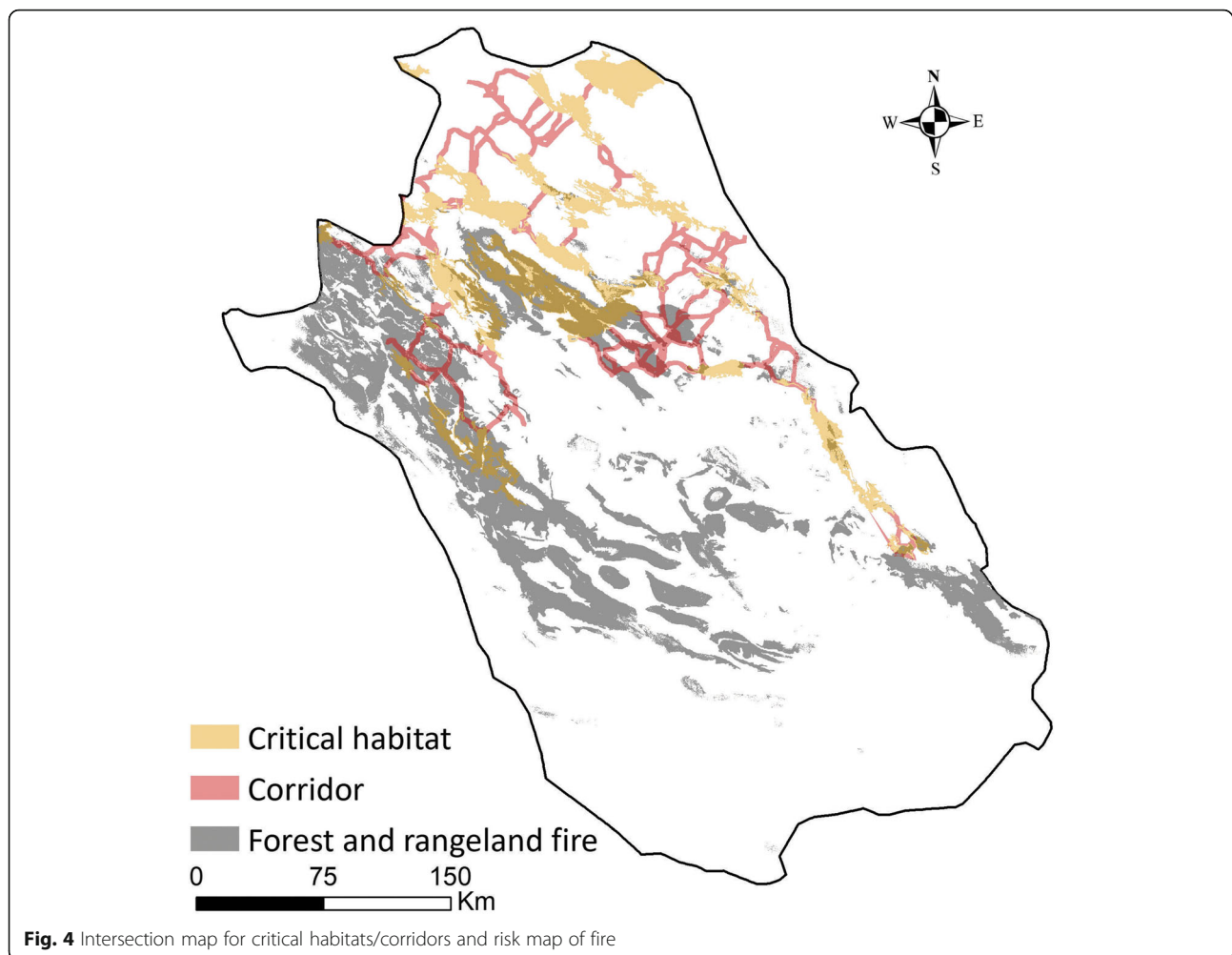
A systematic framework to quantitatively analyze wild-fire effects on brown bears, such as the one demonstrated here (Fig. 2), is much needed in Iran. For species

highly associated with mature forest, there is a strong negative relationship between large and severe fires and habitat quality (e.g., Ganey et al. 2017; Wan et al. 2018; Jones et al. 2020). However, for species that are associated with broad habitat gradients across successional stages, and especially those that forage on vegetation that is associated with early seral conditions, as is brown bear, the relationship is not expected to be usually negative. Therefore, it is necessary to systematically assess the ecological responses of brown bear to differing kinds, extents, and severity of disturbance to guide conservation and management scenarios that are effective (e.g., Chambers et al. 2019).

The effect of environmental variables on brown bear's distribution range

Our model showed that the range of brown bear was constrained mainly by topographic roughness, temperature, rainfall, and forest cover in Iran. Despite differences in environmental conditions such as rainfall and vegetation in different regions where brown bears occur, the importance of forest cover to brown bear's habitat selection has been documented across the globe, such as in Iran (Mohammadi et al. 2021), North America (Proctor et al. 2015), and Europe (Mateo Sanchez et al. 2014; Recio et al. 2021). Forest cover in southwestern Iran provides crucial food and shelter for the brown bear (Ansari and Ghoddousi 2018).

Considering the importance of forests in providing suitable habitats for bears, protecting forest land is the utmost priority for management. Habitat fragmentation



here is often associated with the conversion of forests to agricultural land, which leads to higher presence of livestock and crops and thus greater likelihood of human-bear conflict. These fragmented forests typically contain smaller core habitats with reduced natural food and water availability and access, lower overall connectivity, and greater human presences, which may alter carnivore behaviors such as increasing their aggressiveness. Therefore, the prevention of further land-use changes and forest fragmentation is urgently needed to maintain the suitability of forest habitats for bears. We encourage outreach programs to local communities to promote sustainable land use and control timber harvest and livestock grazing. We also recommend reforestation in targeted areas that can provide core areas and facilitate connectivity of brown bears.

Consistent with previous studies, we also found that rugged terrain, especially with forest cover, is a critical component of brown bear habitat (Mateo Sanchez et al. 2014; Peters et al. 2015). In general, elevation and rugged landscapes are positively related to bear habitat

suitability because they provide optimal climatic and vegetation conditions and limit human presence (Almasieh et al. 2019; Zarzo-Arias et al. 2019; Mohammadi et al. 2021). However, brown bears in Spain generally avoid high-elevation meadows because the food resources are scarce compared to forests at lower elevations (Mateo-Sanchez et al. 2016), and they prefer forests with relatively dense cover further away from settlements at higher elevations (Zarzo-Arias et al. 2019). These differences were likely due to inherent differences in climate, vegetation patterns, and human density and behavior between the two study areas.

Rainfall and perennial surface water is important for providing habitat and can act as limiting factors in range expansion of the bear (Mertzanis et al. 2008; Ansari and Ghoddousi 2018). Because of the aridity in Iran, collaborative management of shared water, especially during the drought years, will be the most crucial action for habitat improvement. Examples of these actions include the installation of water troughs, as well as the restoration of depreciated local surface water resources such

as springs, at strategic locations where wildlife and livestock both have access to (Ansari and Ghoddousi 2018).

Brown bear critical habitats and connectivity between them

We found that some of the predicted suitable habitat patches may be too small to sustain a population despite their high suitability. In a similar study, Maiorano et al. (2019) predicted critical areas for brown bear and found only 15 out of 461 predicted suitable patches met the minimum threshold to be considered as critical areas. In our study, we found 17 of 1640 patches that met our minimum size threshold, suggesting severe fragmentation of critical habitat.

Also, although the predicted critical habitats in the core region are well connected, some of the peripheral habitat patches, especially those in the western and northwestern parts of the study area, are not well connected with the core region. Other research showed that habitat connectivity in simulations strictly depends on the dispersal ability of species (Cushman and Landguth 2012). Consistent with our findings, Ashrafzadeh et al. (2018) reported strong connectivity among core brown bear habitats in Iran, and that the connectivity may be constrained by several pinch points due to bottlenecks in habitat quality, or high concentrations of human activities. Our connectivity projection provides key information to assist managers in identifying and prioritizing efforts in managing key corridors for brown bear dispersal.

Overlap of key habitats and corridors by conservation areas

Conservation areas are essential to provide extensive and contiguous habitats for carnivores in Iran because they support a high density of prey species and are exposed to lower human disturbance (Ashrafzadeh et al. 2020). In contrast to conservation areas, unprotected areas in Iran are believed to exhibit high resistance to species movement because of unsuitable habitats and high density of human settlements (Moqanaki and Cushman 2017). Despite their important role in carnivore conservation, critical habitats and corridors received relatively poor protection under the current design of conservation areas. This problem has been discussed for other carnivores as well (Moqanaki and Cushman 2017; Ashrafzadeh et al. 2018; Kaszta et al. 2020). Location bias (designing new conservation areas mainly in topographically remote landscapes), conservation bias (i.e., varying conservation effort in different types of the conservation areas), and spatial bias (i.e., designing new conservation areas regardless of their spatial configuration within the compositional structure of the current conservation areas) in designing new conservation areas in Iran may

lessen conservation effectiveness of the conservation network for some species, as for the brown bear. Therefore, conservation areas do not necessarily have more permeability to individuals' movement.

The highest overlap between conservation areas, critical habitats, and corridors was observed in the northwest of the core area and north, northeast, and southwest of the peripheral area, with nine conservation areas (Tang-e-Bostanak, Margoan, Male-Gale, Barm Firoz, Arjan & Parishan *PAs*, Basiran, Kooh-Kheresi, Dare-Bagh, and Kooh-e-Khom *NHAs*) covering the most important identified critical habitats. Because the coverage of conservation areas is not sufficient to protect key habitats and migration corridors for brown bears, the proportion of conservation areas with highly suitable habitats should be increased to maximize the protection of habitat extent and maintain connectivity. Establishing new conservation areas in unprotected critical habitats is highly encouraged, especially in the northern parts of the study area where most of the key habitats are located.

The risk of occurrence of fire within the conservation areas, critical habitats, and corridors

This study highlights the high wildfire risks that threaten some of the existing conservation areas. For example, Tang-e-Bostanak, Male-Gale, Arjan & Parishan *PAs*, Kooh-Kheresi, Padena, and Mel-Boland *NHAs* had high risk of fire. No-hunting areas had the largest coverage of the predicted critical habitats than other types of conservation areas. These types of conservation areas have recently been established to increase the species populations in areas with illegal hunting. Despite the importance of no-hunting areas in the protection of key habitats, these areas are more likely to be exposed to fire due to less strict conservation, and less legal protection against anthropogenic impacts. This finding has important message for practitioners, that no-hunting areas are more in danger and therefore need further consideration in the conservation programs. An important suggestion can be to upgrade the existing no-hunting areas in the region to official protected areas (e.g., protected areas, wildlife refuge, or national parks) and to expand them to incorporate also neighboring lands where species may occur. Also, the results of species distribution modeling and habitat connectivity showed that most of the critical habitats and corridors are located outside conservation areas. For example, there is a high risk of fires in isolated and unprotected critical habitats in western and northern parts of the peripheral area. Brown bears in these regions may experience increased exposure to wildfires in the future.

Fires is an important regulator that helps maintain ecosystem health. However, fires have increasingly

become a threat to many forests and the biodiversity due to altered fire regimes (Cushman et al. 2011). The results of composite maps showed that the highest fire risk in the predicted critical habitats is in the central parts of the core zone and the western parts of the peripheral areas. These areas contain the study area's largest extent of forests in the Zagros Mountains. In addition, the migration corridors between critical habitats in the central parts of the core zone and western parts of the peripheral area showed the greatest potential for fire.

While fires may have short-term positive effects on some fire-adapted species, wildfires have contributed to the reduction in populations of some large carnivores such gray wolf (*Canis lupus*) in Minnesota because of its fire-dependent preys (Kramp et al. 1983). Cunningham and Ballard (2004) studied short-term impacts of wildfire on black bear demographics in central Arizona. They found that wildfire had significant negative impacts on adult sex ratio, recruitment of cubs, and superpopulation size. Richardson et al. (2007) showed that forest fires decrease the stability of polar bear den sites (*Ursus maritimus*) in western Hudson Bay and lead to the degradation of the surrounding habitats by significantly altering vegetation composition and increasing the depth of the active layer. According to the results of Richardson et al. (2007), bears do not use burned areas for denning. The accelerated rate in forest fires as a result of changing climate may reduce the amount of suitable denning habitats in the future. Therefore, managers should be aware of possible negative short-term consequences of wildfire on cub survival. In addition, the removal of forests by increasing fires may increase forest fragmentation. As a result, bear activities that typically occur in forests will be affected. They either will have to adapt to the altered landscape, or will have to move to remnant patches of intact forests. In either case, their energy expenditure will increase and thus may lead to reduced fitness. So, improving connectivity between forest remnant patches will be useful. Additionally, regulations that limit human induced wildfires will be helpful.

Knowledge on the brown bear's key habitats with high risk of fire is necessary for wildlife managers to understand the short-term and long-term impacts of fires on bears. Our model can assist with planning the locations of future prescribed fires or early reconstruction and recovery actions following fires.

Scope and limitations

Although our framework performed well in identifying key habitats with high risk of forest fire, we recognize shortcomings of the framework. First, as we did not include GPS data to validate the predicted critical habitats

and corridors, our models may not accurately predict distribution range and movement patterns of the studied species especially in the peripheral area (e.g., Zeller et al. 2018). However, we found high performance of the model to predict suitable habitats outside the calibration area, and some prior work on brown bear found that habitat suitability modeling can be an adequate surrogate for connectivity (Mateo-Sánchez et al. 2015a; Mateo-Sánchez et al. 2015b). Second, we did not include more proximate environmental variables into the models. For example, while the predicted suitable habitats are located in forest regions, we did not consider the effects of composition and configuration of different forest types in the models. Mateo Sanchez et al. (2014) showed that brown bears respond differentially to different kinds of forest and different spatial metrics measuring forest configuration in the landscape. Another factor that may pose additional limitations on the species presence in the predicted suitable habitats is human-wildlife conflict (e.g., Rostro-García et al. 2016). If the predicted critical habitats are located in close proximity to human settlements, the persecution of brown bear due to human-wildlife conflict may continue to increase and pose additional limitations on the occupation of the predicted critical habitats (e.g., Cushman et al. 2018). So, we strongly recommend incorporating human attitudes toward bears and human-wildlife conflict into models (e.g., Broekhuis et al. 2017).

Radiotelemetry or satellite tracking as a basis for testing the predicted linkages among habitats has just been started for a few species in Iran. We hope that wildlife tracking will become more feasible in the near future, but until then, we have to rely on the habitat suitability-based estimates of landscape resistance. Given the large assumptions made by developing a resistance surface from a habitat model based, it is important to empirically validate the predicted corridors through monitoring movements of bears using camera-trapping or satellite tracking (e.g., Proctor et al. 2015) and landscape genetic analyses (e.g., Proctor et al. 2005; Kopatz et al. 2012). For example, Proctor et al. (2015) combined resource selection functions and human presence data to predict core habitat and develop cost surfaces for connectivity network of grizzly bears (*Ursus arctos*) in Canada–US trans-border region, and evaluated their prediction through GPS telemetry locations. Peck et al. (2017) used step-selection functions and randomized shortest path to generate conductance surfaces and estimated the average number of net passages for grizzly bear populations in the Greater Yellowstone Ecosystem and the Northern Continental Divide Ecosystem. Their finding confirmed that randomized shortest path algorithm provides detailed, spatially explicit information for identifying and prioritizing conservation measures aiming at improving landscape connectivity.

Conclusion and conservation implications

There are four major findings from this study that are especially relevant to brown bear conservation and management. First, the spatial pattern of brown bear's critical habitats showed that most of the key habitats are located in the northern parts of the study area and have moderate to high connectivity. Second, we found that 40% of the predicted critical habitats and 11% of corridors are located within the boundaries of the existing conservation areas which may increase exposure to the effects of anthropogenic disturbance due to lack of conservation programs in unprotected areas. Third, the results of forest fire risk mapping showed that 35.65% of the species' key habitats are located in regions with a high risk of fire. Fourth, although the susceptibility of the existing conservation areas (such as national parks) to fire was low, some of the conservation areas are prone to the occurrence of fires. Our results can be used to inform biodiversity managers to design conservation efforts before the occurrence of fires and early reconstruction and recovery actions following event (Chambers et al. 2019).

The accelerated rate of human-induced habitat destruction and changing climate has led to increases in the size, frequency and severity of wildfires in many parts of the world, including Iran. However, there is little evidence regarding the long-term effects of changing fire regimes on most wildlife species. Mitigation efforts should nevertheless consider the minimization of direct or indirect effects of wildfires on species when they are strongly negative and can be mitigated by practical management means (e.g., Ganey et al. 2017; Wan et al. 2018).

The habitat suitability and connectivity models we produced clarify the distribution, habitat relationships, and linkages across the brown bear population, whereas the fire risk model provides information on which habitat and corridors are most susceptible to fires. What remains to be explored is what effects of fires are on bears and if they are scale dependent in their effects (e.g., Wan et al. 2018; Wan et al. 2020). Although wildlife habitats are threatened by large and high-severity wildfires due to the warming climate, there is few data on the effect of spatial scale on the relationship between wildfires and habitat modifications. For example, Wan et al. (2020) investigated potential relationships between burn severity and changes in habitat suitability of Mexican spotted owl (*Strix occidentalis*) at different spatial scales through multi-scale habitat selection model. They found that fire effects on habitat suitability of the species changed at different scales and the strength and direction of relationships were scale-dependent.

Our analytical framework for predicting critical habitats and their susceptibility to fire has many management and conservation implications. First, the critical habitats with high risk of fire with negative impacts

should receive research, management, and conservation priority. We recommend constructing fire trucks in areas with a high risk of fire and management according to principles of fire ecology and land use planning-LUP requirements. Also, the predicted migration corridors with low risk of forest fire should be considered in maintaining or improving connectivity between the critical conservation areas (Wasserman et al. 2013). We recommend increasing the connectivity among critical habitats associated with high forest fire risks, especially in conservation areas to allow range expansion of the species and facilitate its movement. For example, this can be accomplished through designating new conservation areas with different degrees of protection through zoning—higher restrictions in critical habitat associated with higher fire risk. Also, the creation and maintenance of intermediate stepping stone corridors might facilitate gene flow and prevent the isolation of small populations while acting as fire breaks in the event of a fire. Finally, we propose that the systematic risk assessment framework demonstrated here can be more broadly applied for the conservation of other forest species that are facing similar threats.

Supplementary information

The online version contains supplementary material available at <https://doi.org/10.1186/s42408-021-00125-0>.

Additional file 1: Table S1. List of variables used for predicting critical habitats of brown bear and connectivity between key habitats. **Text S1.** Preprocessing of variables.

Acknowledgements

We are grateful for Fars provincial Department of Environment (FDoE) for permission to enter conservation areas. This research was financially supported by Iran National Science Foundation, Presidency of Islamic Republic of Iran (grant number: 98005119).

Code availability

Not applicable.

Authors' contributions

Rasoul Khosravi: conceptualization, methodology, investigation, formal analysis, writing original draft, writing, review, and editing. Hamid Reza Pourghasemi: conceptualization, methodology, formal analysis, writing, review, and editing. Roya Adavoudi: writing, review, and editing. Leila Julia: data collection. Ho Yi Wan: methodology, writing, review, and editing. The authors read and approved the final manuscript.

Funding

This research was financially supported by the Iran National Science Foundation, Presidency of Islamic Republic of Iran (grant number: 98005119).

Availability of data and materials

All data will be deposited after acceptance

Declarations

Ethics approval and consent to participate

We obtained consent from the responsible authorities at the institute/organization where the work has been carried out. Also, all our methods to record the presence localities of the species were safe and non-invasive.

All authors whose names appear on the submission

- 1) Made substantial contributions to the conception or design of the work; or the acquisition, analysis, or interpretation of data.
- 2) Drafted the work or revised it critically for important intellectual content
- 3) Agree to be accountable for all aspects of the work in ensuring that questions related to the accuracy or integrity of any part of the work are appropriately investigated and resolved.

Consent for publication

All authors whose names appear on the submission approved the version to be published

Competing interests

The authors declare that they have no competing interests.

Author details

¹Department of Natural Resources and Environmental Engineering, College of Agriculture, Shiraz University, Shiraz 71441-13131, Iran. ²Museum and Institute of Zoology, Polish Academy of Sciences, Gdansk, Poland. ³Faculty of Agriculture and Natural Resources, Science and Research Branch, Islamic Azad University, Ahvaz, Iran. ⁴Department of Wildlife, Humboldt State University, Arcata, CA 95521, USA.

Received: 4 August 2021 Accepted: 7 December 2021

Published online: 24 January 2022

References

- Abdullah, A.Y.M., A. Masrur, M.S.G. Adnan, M. Baky, A. Al, Q.K. Hassan, and A. Dewan. 2019. Spatio-temporal patterns of land use/land cover change in the heterogeneous coastal region of Bangladesh between 1990 and 2017. *Remote Sensing* 11 (7): 790. <https://doi.org/10.3390/rs11070790>.
- Albery, G.F., I. Turilli, M.B. Joseph, J. Foley, C.H. Frere, and S. Bansal. 2021. From flames to inflammation: how wildfires affect patterns of wildlife disease. *Fire Ecology* 17 (1): 1–17. <https://doi.org/10.1186/s42408-021-00113-4>.
- Allouche, O., A. Tsoar, and R. Kadmon. 2006. Assessing the accuracy of species distribution models: prevalence, kappa and the true skill statistic (TSS). *Journal of Applied Ecology* 43 (6): 1223–1232. <https://doi.org/10.1111/j.1365-2664.2006.01214.x>.
- Almasieh, K., H. Rouhi, and S. Kaboodvandpour. 2019. Habitat suitability and connectivity for the brown bear (*Ursus arctos*) along the Iran-Iraq border. *European Journal of Wildlife Research* 65 (4): 57. <https://doi.org/10.1007/s10344-019-1295-1>.
- Andelman, S.J., and W.F. Fagan. 2000. Umbrellas and flagships: efficient conservation surrogates or expensive mistakes? *Proceedings of the National Academy of Sciences* 97 (11): 5954–5959. <https://doi.org/10.1073/pnas.100126797>.
- Ansari, M., and A. Ghoddousi. 2018. Water availability limits brown bear distribution at the southern edge of its global range. *Ursus* 29 (1): 13–24. <https://doi.org/10.2192/URSUS-D-16-00017.1>.
- Ashrafzadeh, M.R., M. Kaboli, and M.R. Naghavi. 2016. Mitochondrial DNA analysis of Iranian brown bears (*Ursus arctos*) reveals new phylogeographic lineage. *Mammalian Biology* 81 (1): 1–9. <https://doi.org/10.1016/j.mambio.2015.09.001>.
- Ashrafzadeh, M.R., R. Khosravi, M.A. Adibi, A. Taktehrani, H.Y. Wan, and S.A. Cushman. 2020. A multi-scale, multi-species approach for assessing effectiveness of habitat and connectivity conservation for endangered felids. *Biological Conservation* 245: 108523. <https://doi.org/10.1016/j.biocon.2020.108523>.
- Ashrafzadeh, M.R., R. Khosravi, M. Ahmadi, and M. Kaboli. 2018. Landscape heterogeneity and ecological niche isolation shape the distribution of spatial genetic variation in Iranian brown bears, *Ursus arctos* (Carnivora: Ursidae). *Mammalian Biology* 93 (1): 64–75. <https://doi.org/10.1016/j.mambio.2018.08.007>.
- Banks, S.C., E.J. Knight, L. McBurney, D. Blair, and D.B. Lindenmayer. 2011. The effects of wildfire on mortality and resources for an arboreal marsupial: resilience to fire events but susceptibility to fire regime change. *PLoS One* 6 (8): e22952. <https://doi.org/10.1371/journal.pone.0022952>.
- Blanchard, B.M., and R.R. Knight. 1990. Reactions of grizzly bears, *Ursus arctos horribilis*, to wildfire in Yellowstone National Park, Wyoming. *Canadian Field-Naturalist* 104: 592–597.
- Broekhuis, F., S.A. Cushman, and N.B. Elliot. 2017. Identification of human–carnivore conflict hotspots to prioritize mitigation efforts. *Ecology and Evolution* 7 (24): 10630–10639. <https://doi.org/10.1002/ece3.3565>.
- Chambers, J.C., C.R. Allen, and S.A. Cushman. 2019. Operationalizing ecological resilience concepts for managing species and ecosystems at risk. *Frontiers in Ecology and Evolution* 7: 241. <https://doi.org/10.3389/fevo.2019.00241>.
- Clark, D.A., R.G. Anthony, and L.S. Andrews. 2011. Survival rates of northern spotted owls in post-fire landscapes of southwest Oregon. *Journal of Raptor Research* 45 (1): 38–47. <https://doi.org/10.3356/JRR-10-42.1>.
- Cunningham, S.C., and W.B. Ballard. 2004. Effects of wildfire on black bear demographics in central Arizona. *Wildlife Society Bulletin* 32 (3): 928–937. <https://doi.org/10.2193/0091-7648>.
- Cushman, S.A., N.B. Elliot, D. Bauer, K. Kesch, L. Bahaa-el-din, H. Bothwell, M. Flyman, G. Mtare, D.W. Macdonald, and A.J. Loveridge. 2018. Prioritizing core areas, corridors and conflict hotspots for lion conservation in southern Africa. *PLoS One* 13 (7): e0196213. <https://doi.org/10.1371/journal.pone.0196213>.
- Cushman, S.A., N.B. Elliot, D.W. Macdonald, and A.J. Loveridge. 2016. A multi-scale assessment of population connectivity in African lions (*Panthera leo*) in response to landscape change. *Landscape Ecology* 31 (6): 1337–1353. <https://doi.org/10.1007/s10980-015-0292-3>.
- Cushman, S.A., and E.L. Landguth. 2012. *Ecological associations, dispersal ability, and landscape connectivity in the northern Rocky Mountains*. Vol. 21, 90. Res. Pap. RMRS-RP-90. Fort Collins, CO: US Department of Agriculture, Forest Service, Rocky Mountain Research Station. <https://doi.org/10.2737/RMRS-RP-90>.
- Cushman, S.A., E.L. Landguth, and C.H. Flather. 2013. Evaluating population connectivity for species of conservation concern in the American Great Plains. *Biodiversity and Conservation* 22 (11): 2583–2605. <https://doi.org/10.1007/s10531-013-0541-1>.
- Cushman, S.A., E.A. Macdonald, E.L. Landguth, Y. Malhi, and D.W. Macdonald. 2017. Multiple-scale prediction of forest loss risk across Borneo. *Landscape Ecology* 32 (8): 1581–1598. <https://doi.org/10.1007/s10980-017-0520-0>.
- Cushman, S.A., K.S. McKelvey, and M.K. Schwartz. 2009. Use of empirically derived source–destination models to map regional conservation corridors. *Conservation Biology* 23 (2): 368–376. <https://doi.org/10.1111/j.1523-1739.2008.01111.x>.
- Cushman, S.A., T.N. Wasserman, and K. McGarigal. 2011. Modeling landscape fire and wildlife habitat. In *The Landscape Ecology of Fire*, ed. M. Donald, M. Carol, and M.A. Donald, 223–245. Springer.
- Dennis, R., E. Meijaard, G. Applegate, R. Nasi, and P. Moore. 2001. *Impacts of human-caused fires on biodiversity and ecosystem functioning, and their causes in tropical, temperate and boreal forest biomes*. Secretariat of the Convention on Biological Diversity.
- Dondina, O., V. Orioli, E. Torretta, F. Merli, L. Bani, and A. Meriggi. 2020. Combining ensemble models and connectivity analyses to predict wolf expected dispersal routes through a lowland corridor. *PLoS One* 15 (2): e0229261. <https://doi.org/10.1371/journal.pone.0229261>.
- Dormann, C.F., J. Elith, S. Bacher, C. Buchmann, G. Carl, G. Carré, J.R.G. Marquéz, B. Gruber, B. Lafourcade, and P.J. Leitão. 2013. Collinearity: a review of methods to deal with it and a simulation study evaluating their performance. *Ecography* 36 (1): 27–46. <https://doi.org/10.1111/j.1600-0587.2012.07348.x>.
- Ecke, F., S.A. Nematollahi Mahani, M. Evander, B. Hörnfeldt, and H. Khalil. 2019. Wildfire-induced short-term changes in a small mammal community increase prevalence of a zoonotic pathogen? *Ecology and Evolution* 9 (22): 12459–12470. <https://doi.org/10.1002/ece3.5688>.
- Elith, J., M. Kearney, and S. Phillips. 2010. The art of modelling range-shifting species. *Methods in Ecology and Evolution* 1 (4): 330–342. <https://doi.org/10.1111/j.2041-210X.2010.00036.x>.
- Evans, J., J. Oakleaf, S. Cushman, and D. Theobald. 2014. *An ArcGIS toolbox for surface gradient and geomorphometric modeling, version 2.0-0*. <http://evansmurphy.wix.com/evansspatial>.
- Evans, J.S., and S.A. Cushman. 2009. Gradient modeling of conifer species using random forests. *Landscape Ecology* 24 (5): 673–683. <https://doi.org/10.1007/s10980-009-9341-0>.
- Faluccci, A., P. Ciucci, L. Maiorano, L. Gentile, and L. Boitani. 2009. Assessing habitat quality for conservation using an integrated occurrence–mortality model. *Journal of Applied Ecology* 46 (3): 600–609. <https://doi.org/10.1111/j.1365-2664.2009.01634.x>.
- Farashi, A. 2018. Identifying key habitats to conserve the threatened brown bear in northern Iran. *Russian Journal of Ecology* 49 (5): 449–455. <https://doi.org/10.1134/S1067413618050041>.
- Ganey, J.L., H.Y. Wan, S.A. Cushman, and C.D. Vojta. 2017. Conflicting perspectives on spotted owls, wildfire, and forest restoration. *Fire Ecology* 13 (3): 146–165. <https://doi.org/10.4996/fireecology.130318020>.

- Genuer, R., J.M. Poggi, and C. Tuleau-Malot. 2010. Variable selection using random forests. *Pattern Recognition Letters* 31 (14): 2225–2236. <https://doi.org/10.1016/j.patrec.2010.03.014>.
- Gettle, B., and H. Ziaie. 1999. On the distribution and status of the brown bear, *Ursus arctos*, and the Asiatic black bear, *U. thibetanus*, in Iran. *Zoology in the Middle East* 18 (1): 5–8. <https://doi.org/10.1080/09397140.1999.10637777>.
- Hamer, D. 1999. Forest fire's influence on yellow hedsarum habitat and its use by grizzly bears in Banff National Park, Alberta. *Canadian Journal of Zoology* 77 (10): 1513–1520. <https://doi.org/10.1139/z99-123>.
- Hijmans, R.J., S. Phillips, J. Leathwick, J. Elith, and M.R.J. Hijmans. 2017. Package 'dismo'. *Circles* 9 (1): 1–68.
- Hobbs, R.J., and L.F. Huenneke. 1992. Disturbance, diversity, and invasion: implications for conservation. *Conservation Biology* 6 (3): 324–337. <https://doi.org/10.1046/j.1523-1739.1992.06030324.x>.
- Johnson, D.H. 1980. The comparison of usage and availability measurements for evaluating resource preference. *Ecology* 61 (1): 65–71. <https://doi.org/10.2307/1937156>.
- Jones, G.M., H.A. Kramer, S.A. Whitmore, W.J. Berigan, D.J. Tempel, C.M. Wood, B.K. Hobart, T. Erker, F.A. Atuo, and N.F. Pietrunti. 2020. Habitat selection by spotted owls after a megafire reflects their adaptation to historical frequent-fire regimes. *Landscape Ecology* 35 (5): 1199–1213. <https://doi.org/10.1007/s10980-020-01010-y>.
- Kasza, Z., S. Cushman, and D. Macdonald. 2020. Prioritizing habitat core areas and corridors for a large carnivore across its range. *Animal Conservation* 23 (5): 607–616. <https://doi.org/10.1111/acv.12575>.
- Khosravi, R., M.-R. Hemami, and S.A. Cushman. 2019. Multi-scale niche modeling of three sympatric felids of conservation importance in central Iran. *Landscape Ecology* 34 (10): 2451–2467. <https://doi.org/10.1007/s10980-019-00900-0>.
- Kopatz, A., H.G. Eiken, S.B. Hagen, M. Ruokonen, R. Esparza-Salas, J. Schregel, I. Kojola, M.E. Smith, I. Warttinen, and P.E. Aspholm. 2012. Connectivity and population subdivision at the fringe of a large brown bear (*Ursus arctos*) population in North Western Europe. *Conservation Genetics* 13 (3): 681–692. <https://doi.org/10.1007/s10592-012-0317-2>.
- Kramp, B.A., D.R. Patton, and W.W. Brady. 1983. RUN WILD: Wildlife/habitat relationships: The effects of fire on wildlife habitat and species. Run Wild Wildlife/ habitat relationships. U.S. Department of Agriculture, Forest Service, Southwestern Region. p. 29.
- Landguth, E., B. Hand, J. Glassy, S. Cushman, and M. Sawaya. 2012. UNICOR: a species connectivity and corridor network simulator. *Ecography* 35 (1): 9–14. <https://doi.org/10.1111/j.1600-0587.2011.07149.x>.
- Landis, J.R., and G.G. Koch. 1977. The measurement of observer agreement for categorical data. *Biometrics* 33 (1): 159–174. <https://doi.org/10.2307/2529310>.
- Liu, C., M. White, and G. Newell. 2013. Selecting thresholds for the prediction of species occurrence with presence-only data. *Journal of Biogeography* 40 (4): 778–789. <https://doi.org/10.1111/jbi.12058>.
- Macdonald, D.W., H.M. Bothwell, Z. Kasza, E. Ash, G. Bolongon, D. Burnham, Ö.E. Can, A. Campos-Arceiz, P. Channa, and G.R. Clements. 2019. Multi-scale habitat modelling identifies spatial conservation priorities for mainland clouded leopards (*Neofelis nebulosa*). *Diversity and Distributions* 25 (10): 1639–1654. <https://doi.org/10.1111/ddi.12967>.
- Macdonald, E.A., S.A. Cushman, E.L. Landguth, A.J. Hearn, Y. Malhi, and D.W. Macdonald. 2018. Simulating impacts of rapid forest loss on population size, connectivity and genetic diversity of Sunda clouded leopards (*Neofelis diardi*) in Borneo. *PLoS One* 13 (9): e0196974. <https://doi.org/10.1371/journal.pone.0196974>.
- Maiorano, L., L. Chiverini, M. Falco, and P. Ciucci. 2019. Combining multi-state species distribution models, mortality estimates, and landscape connectivity to model potential species distribution for endangered species in human dominated landscapes. *Biological Conservation* 237: 19–27. <https://doi.org/10.1016/j.biocon.2019.06.014>.
- Mateo Sanchez, M.C., S.A. Cushman, and S. Saura. 2014. Scale dependence in habitat selection: the case of the endangered brown bear (*Ursus arctos*) in the Cantabrian Range (NW Spain). *International Journal of Geographical Information Science* 28 (8): 1531–1546. <https://doi.org/10.1080/13658816.2013.776684>.
- Mateo-Sánchez, M.C., N. Balkenhol, S. Cushman, T. Pérez, A. Domínguez, and S. Saura. 2015a. A comparative framework to infer landscape effects on population genetic structure: are habitat suitability models effective in explaining gene flow? *Landscape Ecology* 30 (8): 1405–1420. <https://doi.org/10.1007/s10980-015-0194-4>.
- Mateo-Sánchez, M.C., N. Balkenhol, S. Cushman, T. Pérez, A. Domínguez, and S. Saura. 2015b. Estimating effective landscape distances and movement corridors: comparison of habitat and genetic data. *Ecosphere* 6 (4): 1–16. <https://doi.org/10.1890/ES14-00387.1>.
- Mateo-Sanchez, M.C., A. Gaston, J.I. García-Viñas, J. Cuevas, C. López-Leiva, A. Fernández-Landa, N. Algeet-Abarquero, M. Marchamalo, M.-J. Fortin, and S. Saura. 2016. Seasonal and temporal changes in species use of the landscape: how do they impact the inferences from multi-scale habitat modeling? *Landscape Ecology* 31 (6): 1261–1276. <https://doi.org/10.1007/s10980-015-0324-z>.
- McGarigal, K., S.A. Cushman, and E. Ene. 2012. FRAGSTATS v4: spatial pattern analysis program for categorical and continuous maps. computer software program produced by the authors at the University of Massachusetts, Amherst. Available at the following web site: <http://www.umass.edu/landeco/research/fragstats/fragstats.html>.
- Meng, Q., F. Miao, J. Zhen, Y. Huang, X.-y. Wang, and Y. Peng. 2016. Impact of earthquake-induced landslide on the habitat suitability of giant panda in Wolong, China. *Journal of Mountain Science* 13 (10): 1789–1805. <https://doi.org/10.1007/s11629-015-3734-0>.
- Mertzani, G., A.S. Kallimanis, N. Kanellopoulos, S.P. Sgardelis, A. Tragos, and I. Aravidis. 2008. Brown bear (*Ursus arctos* L.) habitat use patterns in two regions of northern Pindos, Greece—management implications. *Journal of Natural History* 42 (5-8): 301–315. <https://doi.org/10.1080/00222930701835175>.
- Milanović, S., N. Marković, D. Pamučar, L. Gigović, P. Kostić, and S.D. Milanović. 2021. Forest fire probability mapping in eastern Serbia: Logistic regression versus random forest method. *Forests* 12 (1): 5. <https://doi.org/10.3390/f12010005>.
- Mohammadi, A., K. Almasieh, D. Nayeri, F. Ataei, A. Khani, J. López-Bao, V. Penteriani, and S. Cushman. 2021. Identifying priority core habitats and corridors for effective conservation of brown bears in Iran. *Scientific Reports* 11 (1): 1–13. <https://doi.org/10.1038/s41598-020-79970-z>.
- Moqanaki, E., and S. Cushman. 2017. All roads lead to Iran: Predicting landscape connectivity of the last stronghold for the critically endangered Asiatic cheetah. *Animal Conservation* 20 (1): 29–41. <https://doi.org/10.1111/acv.12281>.
- Morin, D.J., A.K. Fuller, J.A. Royle, and C. Sutherland. 2017. Model-based estimators of density and connectivity to inform conservation of spatially structured populations. *Ecosphere* 8 (1): e01623. <https://doi.org/10.1002/ecs2.1623>.
- Murphy, D. 2019. Random forest (machine learning). In *Using random forest machine learning methods to identify spatiotemporal patterns of cheatgrass invasion through Landsat land cover classification in the Great Basin from 1984 to 2011*. University of Colorado: Thesis.
- Nimmo, D.G., S. Avitabile, S.C. Banks, R. Bliede Bird, K. Callister, M.F. Clarke, C.R. Dickman, T.S. Doherty, D.A. Driscoll, and A.C. Greenville. 2019. Animal movements in fire-prone landscapes. *Biological Reviews* 94 (3): 981–998. <https://doi.org/10.1111/brv.12486>.
- Pausas, J.G., and J.E. Keeley. 2019. Wildfires as an ecosystem service. *Frontiers in Ecology and the Environment* 17 (5): 289–295. <https://doi.org/10.1002/fee.2044>.
- Peck, C.P., F.T. van Manen, C.M. Costello, M.A. Haroldson, L.A. Landenburger, L.L. Roberts, D.D. Bjornlie, and R.D. Mace. 2017. Potential paths for male-mediated gene flow to and from an isolated grizzly bear population. *Ecosphere* 8 (10): e01969. <https://doi.org/10.1002/ecs2.1969>.
- Peters, W., M. Hebblewhite, M. Cavedon, L. Pedrotti, A. Mustoni, F. Zibordi, C. Groff, M. Zanin, and F. Cagnacci. 2015. Resource selection and connectivity reveal conservation challenges for reintroduced brown bears in the Italian Alps. *Biological Conservation* 186: 123–133. <https://doi.org/10.1016/j.biocon.2015.02.034>.
- Pickett, S.T., and P.S. White. 2013. *The ecology of natural disturbance and patch dynamics*. Elsevier.
- Poor, E.E., B.K. Scheick, and J.M. Mullinax. 2020. Multiscale consensus habitat modeling for landscape level conservation prioritization. *Scientific Reports* 10 (1): 1–13. <https://doi.org/10.1038/s41598-020-74716-3>.
- Pourghasemi, H.R., N. Kariminejad, M. Amiri, M. Edalat, M. Zarafshar, T. Blaschke, and A. Cerda. 2020. Assessing and mapping multi-hazard risk susceptibility using a machine learning technique. *Scientific Reports* 10 (1): 1–11. <https://doi.org/10.1038/s41598-020-60191-3e>.
- Proctor, M.F., B.N. McLellan, C. Strobeck, and R.M. Barclay. 2005. Genetic analysis reveals demographic fragmentation of grizzly bears yielding vulnerably small populations. *Proceedings of the Royal Society B: Biological Sciences* 272 (1579): 2409–2416. <https://doi.org/10.1098/rspb.2005.3246>.

- Proctor, M.F., S.E. Nielsen, W.F. Kasworm, C. Servheen, T.G. Radandt, A.G. Machutchon, and M.S. Boyce. 2015. Grizzly bear connectivity mapping in the Canada–United States trans-border region. *The Journal of Wildlife Management* 79 (4): 544–558. <https://doi.org/10.1002/jwmg.862>.
- Rahmati, O., F. Falah, S.A. Naghibi, T. Biggs, M. Soltani, R.C. Deo, A. Cerdà, F. Mohammadi, and D.T. Bui. 2019. Land subsidence modelling using tree-based machine learning algorithms. *Science of the Total Environment* 672: 239–252. <https://doi.org/10.1016/j.scitotenv.2019.03.496>.
- Recio, M., F. Knauer, A. Molinari-Jobin, D. Huber, S. Filacorda, and K. Jerina. 2021. Context-dependent behaviour and connectivity of recolonizing brown bear populations identify transboundary conservation challenges in Central Europe. *Animal Conservation* 24 (1): 73–83. <https://doi.org/10.1111/acv.12624>.
- Reilly, S.J., S.D. DeGloria, and R.A. Elliot. 1999. Terrain ruggedness index that quantifies topographic heterogeneity. *Intermountain Journal of Science* 5 (1–4): 23.
- Richardson, E., I. Stirling, and B. Kochtubajda. 2007. The effects of forest fires on polar bear maternity denning habitat in western Hudson Bay. *Polar Biology* 30 (3): 369–378. <https://doi.org/10.1007/s00300-006-0193-7>.
- Rostro-García, S., L. Tharchen, L. Abade, C. Astaras, S.A. Cushman, and D.W. Macdonald. 2016. Scale dependence of felid predation risk: identifying predictors of livestock kills by tiger and leopard in Bhutan. *Landscape Ecology* 31 (6): 1277–1298. <https://doi.org/10.1007/s10980-015-0335-9>.
- Sagheb-Talebi, K., M. Pourhashemi, and T. Sajedi. 2014. *Forests of Iran: A treasure from the past, a hope for the future*. Springer. <https://doi.org/10.1007/978-94-007-7371-4>.
- Simberloff, D. 1998. Flagships, umbrellas, and keystones: is single-species management passé in the landscape era? *Biological Conservation* 83 (3): 247–257. [https://doi.org/10.1016/S0006-3207\(97\)00081-5](https://doi.org/10.1016/S0006-3207(97)00081-5).
- Soille, P., and P. Vogt. 2009. Morphological segmentation of binary patterns. *Pattern Recognition Letters* 30 (4): 456–459. <https://doi.org/10.1016/j.patrec.2008.10.015>.
- Wan, H.Y., S.A. Cushman, and J.L. Ganey. 2019a. Improving habitat and connectivity model predictions with multi-scale resource selection functions from two geographic areas. *Landscape Ecology* 34 (3): 503–519. <https://doi.org/10.1007/s10980-019-00788-w>.
- Wan, H.Y., S.A. Cushman, and J.L. Ganey. 2019b. Recent and projected future wildfire trends across the ranges of three spotted owl subspecies under climate change. *Frontiers in Ecology and Evolution* 7: 37. <https://doi.org/10.3389/fevo.2019.00037>.
- Wan, H.Y., S.A. Cushman, and J.L. Ganey. 2020. The effect of scale in quantifying fire impacts on species habitats. *Fire Ecology* 16 (1): 1–15. <https://doi.org/10.1186/s42408-020-0068-2>.
- Wan, H.Y., J.L. Ganey, C.D. Vojta, and S.A. Cushman. 2018. Managing emerging threats to spotted owls. *The Journal of Wildlife Management* 82 (4): 682–697. <https://doi.org/10.1002/jwmg.21423>.
- Wasserman, T., S.A. Cushman, J.S. Littell, A.J. Shirk, and E.L. Landguth. 2013. Population connectivity and genetic diversity of American marten (*Martes americana*) in the United States northern Rocky Mountains in a climate change context. *Conservation Genetics* 14 (2): 529–541. <https://doi.org/10.1007/s10592-012-0336-z>.
- Wasserman, T., S.A. Cushman, and D.O. Wallin. 2012. *Multi scale habitat relationships of Martes americana in northern Idaho, USA*, 21. U.S.A. Res. Pap. RMRS-RP-94. Fort Collins, CO: U.S. Department of Agriculture, Forest Service, Rocky Mountain Research Station.
- Yan, G., S. Liang, X. Gui, Y. Xie, and H. Zhao. 2019. Optimizing landslide susceptibility mapping in the Kongtong District, NW China: comparing the subdivision criteria of factors. *Geocarto International* 34 (13): 1408–1426. <https://doi.org/10.1080/10106049.2018.1499816>.
- Zarzo-Arias, A., V. Penteriani, M.D. Delgado, P. Peón Torre, R. García-González, M.C. Mateo-Sánchez, P. Vázquez García, and F. Dalerum. 2019. Identifying potential areas of expansion for the endangered brown bear (*Ursus arctos*) population in the Cantabrian Mountains (NW Spain). *PloS One* 14 (1): e0209972. <https://doi.org/10.1371/journal.pone.0209972>.
- Zeller, K.A., M.K. Jennings, T.W. Vickers, H.B. Ernest, S.A. Cushman, and W.M. Boyce. 2018. Are all data types and connectivity models created equal? Validating common connectivity approaches with dispersal data. *Diversity and Distributions* 24 (7): 868–879. <https://doi.org/10.1111/ddi.12742>.
- Ziółkowska, E., K. Ostapowicz, V.C. Radeloff, T. Kuemmerle, A. Sergiel, T. Zwijacz-Kozica, F. Zięba, W. Śmietana, and N. Selva. 2016. Assessing differences in connectivity based on habitat versus movement models for brown bears in the Carpathians. *Landscape Ecology* 31 (8): 1863–1882. <https://doi.org/10.1007/s10980-016-0368-8>.

Publisher's Note

Springer Nature remains neutral with regard to jurisdictional claims in published maps and institutional affiliations.

Submit your manuscript to a SpringerOpen® journal and benefit from:

- Convenient online submission
- Rigorous peer review
- Open access: articles freely available online
- High visibility within the field
- Retaining the copyright to your article

Submit your next manuscript at ► [springeropen.com](https://www.springeropen.com)